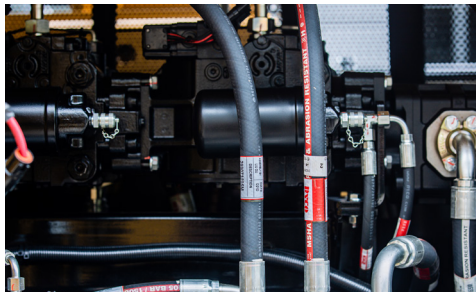
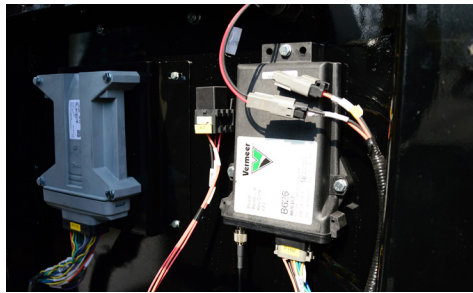


C430 HORIZONTAL DIRECTIONAL DRILL



A SAUER-DANFOSS CLOSED-LOOP PISTON PUMP. That is utilized with merits of low energy consumption and high efficiency.



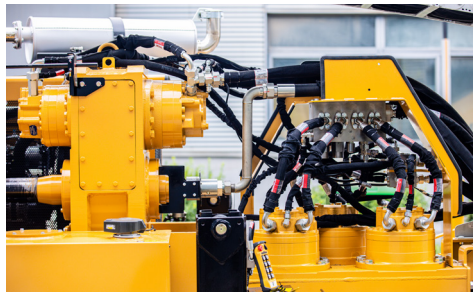
THE PLUS+1 CONTROL SYSTEM. It is an upgraded C-Series Control System for improved reliability and efficiency. This allows faster processing of commands, smooth operation and the option of rock drilling and auto drilling functions to help get through tough ground conditions.



THE REMOTE-LOCK-OUT SYSTEM. Along with the Electric Strike Alert system and operator presence monitoring, the Remote-Lock-Out system are industry leading safety features that are installed.



THE OPERATOR'S STATION. That is ergonomically designed and installed using integrated joystick with fingertip buttons, switches and waterproof controls.



RELIABLE POCLAIRN DRIVE MOTORS. Maximize the efficiency of the system, saving energy and fuel as well as improving reliability and product life. It also allows for larger torque.



THE HIGH SPEED SEMI-AUTO ROD STAGER. Coupled with a high speed carriage at 42 m/min, it is a standard setting that enables faster drill rod coupling and improves work efficiency.

SPECIFICATIONS

DIMENSIONS

Total length (Minimum transport with rod stager): 7.1 m

Total length (Minimum transport with rod loader): 7.3 m

Total width (Minimum transport with rod stager): 2.3 m

Total width (Minimum transport with rod loader): 2.5 m

Total height (Minimum transport with rod stager): 2.6 m

Total height (Minimum transport with rod loader): 2.9 m

Total weight (Base machine with cab and rod stager): 13.3 t

Total weight (Base machine with cab, rod stager and crane): 14.2 t

Total weight (Base machine with cab and rod loader): 14.2 t

Total weight (Base machine with cab, rod loader and 40 rods): 17 t

Total weight (Base machine with cab, rod loader, 40 rods and crane): 17.8 t

PERFORMANCE

Maximum pullback: 43 t

Maximum thrust: 43 t

High thrust/pullback speed: 42 m/min

Low thrust/pullback speed: 14 m/min

Maximum spindle torque: 15,000 Nm

Medium spindle torque: 8,538 Nm

Low spindle torque: 6,232 Nm

High rotation speed: 160 rpm

Medium rotation speed: 110 rpm

Low rotation speed: 80 rpm

Maximum ground drive speed: 2.5 km/h

ENGINE (TIER 3)

Model: QSB5.9-C210-30

Brand: CUMMINS

Power: 153 kW

Rated RPM: 2,200 rpm

*Machine dimensions are for reference purposes and subject to change, depending on set-up. Please contact Vermeer China Engineering for more details on the machine dimension data, based on your set-up.

DRILL PIPE

Type: API NC26

Rod diameter: 83 mm

Rod diameter: 73 mm

Rod length: 3m

Weight: 54 kg

Entry angle: 9 ° - 18 °

FEATURES

Breakout system (Vise): Standard

Manual stakedown: Optional

Drilling lights: Standard

Mud flow indicator: N/A

Cab w/heat and A/C: Standard

Gearbox thrust method: Rack and pinion

Rod loader: Optional

MUD PUMP (OPTION 1)

Maximum pressure: 80 bar

Maximum flow: 460 L/min

MUD PUMP (OPTION 2)

Maximum pressure: 100 bar

Maximum flow: 650 L/min

TANK CAPACITY

Hydraulic tank: 460 L

Fuel tank: 313 L