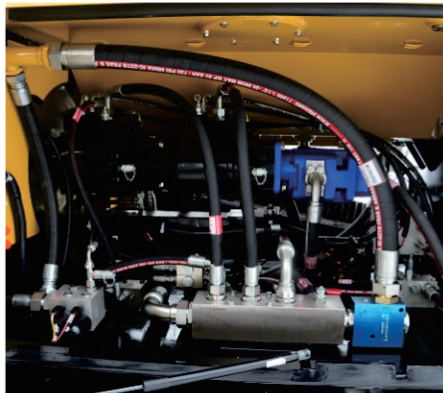


C360

Horizontal Directional Drill



Utilizes a Sauer-Danfoss closed-loop piston pumps with merits of low energy consumption and high efficiency



The imported Poclair drive motors maximize the efficiency of the system, saving energy and fuel, improving reliability and product life.



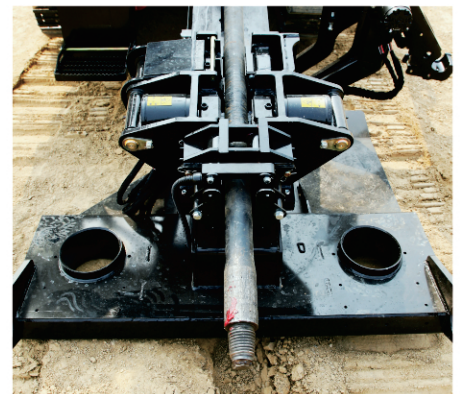
The ergonomically-designed operator station is installed using integrated joystick with fingertip buttons, switches and waterproof controls.



Installed with industry-leading safety features such as remote lockout system, electric strike alert system and operator-presence monitoring.



The standard setting includes high speed semi-auto rod stager with high speed carriage at 42m/min, enabling faster drill rod coupling improving work efficiency.



Open top vise design improves operator visibility when loading and unloading the drill rod. Vise logic can control and shut off the mud pump when the vise is closed. It also makes it easier to use the mud motors & other tooling.

Specifications

Dimensions	
Total Length:	7.17m
Total Width:	2.21m
Total Height:	2.46m
Total Weight (Base machine with Rod Stager):	12ton
Total Weight (Base machine with Rod Loader & 32 Rods):	15.5ton

Performance	
Maximum Pullback:	36t
Maximum Thrust:	36t
High Thrust/ Pullback Speed:	31m/min
Low Thrust/ Pullback Speed:	16m/min
Maximum Spindle Torque:	10,880n.m
Medium Spindle Torque:	8,160n.m
Low Spindle Torque:	5,440n.m
High Rotation Speed:	165rpm
Medium Rotation Speed:	125rpm
Low Rotation Speed:	83rpm
Maximum Ground Drive Speed:	2.5km/h

Engine	
Brand:	CUMMINS
Power:	134kw
Rated RPM:	2,200rpm

Drill Pipe	
Type:	API Nc26
Rod Diameter:	83mm
Rod Diameter:	73mm
Rod Length:	3m
Weight:	70kg
Weight:	54kg
Entry Angle:	10°~18°

Features	
Breakout System (Vise):	Standard
Stakedown:	Optional
Drilling Lights:	Standard
Mud Flow Indicator:	N/A
Cab W/ Heat and A/C:	Standard
Gearbox Thrust Method:	Rack and Pinnion
Roal Loader:	Optional

Mud Pump (Chinese)	
Maximum Pressure:	80bar
Maximum Flow:	350L/min

Tank Capacity	
Hydraulic Tank:	635L
Fuel Tank:	230L

#11 Guwang Road, Jingbin Industrial Park, Wuqing District, Tianjin 301712 China.

Tel : +86 22 5857 8577 Fax: +86 22 5857 8599

vcsinfo@vermeer.com

