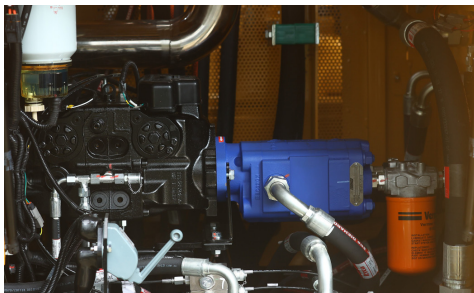
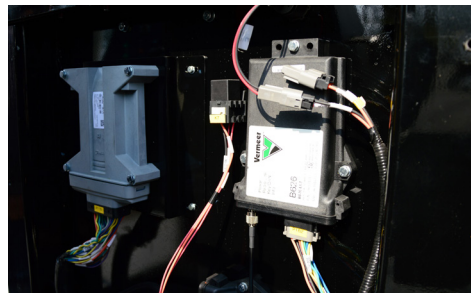


C300 HORIZONTAL DIRECTIONAL DRILL



A SAUER-DANFOSS CLOSED-LOOP PISTON PUMP. That is utilized with merits of low energy consumption and high efficiency.



THE PLUS+1 CONTROL SYSTEM. It is an upgraded C-Series Control System for improved reliability and efficiency. This allows faster processing of commands, smooth operation and the option of rock drilling and auto drilling functions to help get through hard ground conditions.



THE REMOTE-LOCK-OUT SYSTEM. Along with the Electric Strike Alert System and operator presence monitoring, the Remote-Lock-Out System are industry leading safety features that are installed.



THE OPERATOR'S STATION. That is ergonomically designed with maximum visibility, joystick, integrated fingertip buttons, switches and controls.



RELIABLE POCLAIRN DRIVE MOTORS. Maximize the efficiency of the system, saving energy and fuel as well as improving product life and reliability. It also allows for larger torque.



THE FULLY AUTOMATIC DRILL ROD LOADER. Maximizes the efficiency of the drill rod exchange process, greatly improving the overall project efficiency.

SPECIFICATIONS

DIMENSIONS

Total length: 7.3 m

Total width: 2.2 m

Total width (Minimum transport with rod loader): 2.3 m

Total height: 2.3 m

Total height (Minimum transport with rod loader): 3 m

Total weight (Base machine): 10.4 t

Total weight (Base machine with rod loader): 11.6 t

Total weight (Base machine with rod loader and 40 rods): 14.2 t

PERFORMANCE

Maximum pullback: 30 t

Maximum thrust: 30 t

High thrust/pullback speed: 28 m/min

Low thrust/pullback speed: 14 m/min

Maximum spindle torque: 8,918 Nm

Medium spindle torque: 6,692 Nm

Low spindle torque: 4,496 Nm

High rotation speed: 148 rpm

Medium rotation speed: 98 rpm

Low rotation speed: 74 rpm

Maximum ground drive speed: 2.5 km/h

ENGINE (TIER 3)

Model: QSB5.9-C150-31

Power: 113 kW

Rated RPM: 2,200 rpm

DRILL PIPE

Type: API NC23

Rod diameter: 73 mm

Rod length: 3 m

Weight: 65 kg
54 kg

Entry angle: 9° - 18°

FEATURES

Breakout system (Vise): Standard

Manual stakedown: N/A

Cab w/heat and AC: N/A

Operator console: Standard

Gearbox thrust method: Rack and pinion

Rod loader: Standard

Rubber pad: Optional

Remote lockout: Standard

Strike alert: Standard

MUD PUMP (CHINESE)

Maximum pressure: 80 bar

Maximum flow: 350 L/min

TANK CAPACITY

Hydraulic tank: 420 L

Fuel tank: 230 L

*Machine dimensions are for reference purposes and subject to change, depending on set-up. Please contact Vermeer China Engineering for more details on the machine dimension data, based on your set-up.